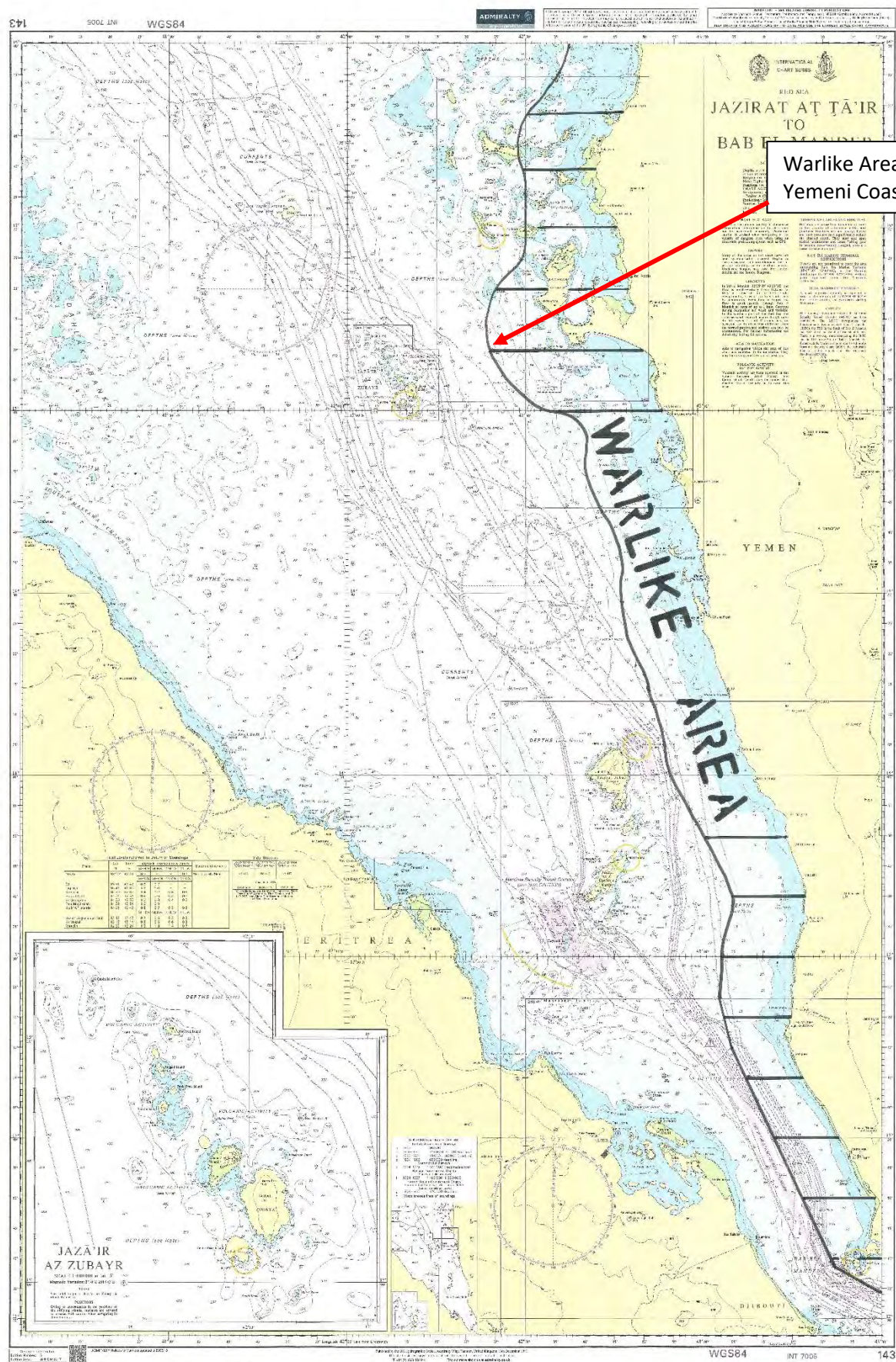


**IBF LIST**  
**of designated risk areas, with applicable benefits (as of 1<sup>st</sup> January 2023):**

1. **IBF Warlike Operations Area – 12 nm. off the mainland Yemeni Coast, including all ports, excluding Maritime Security Transit Corridor (MSTC) in the Red Sea – Charts 1, 2 and 3**
  - bonus equal to basic wage, payable for 5 days minimum + per day if longer;
  - doubled compensations for death and disability;
  - right to refuse sailing, with repatriation at company's cost and compensation equal to 2 month's basic wage
  - recommended to operate at ISPS Level 3
  
2. **"IBF Extended Risk Zone" – Gulf of Guinea, from the Liberia/Ivory Coast border to 00°N 005°E, to the Angola/Namibia border – Chart 4**
  - bonus equal to basic wage, payable only on the day the vessel is attacked in an act of piracy;
  - doubled compensations for death and disability if they occur on the day the vessel is attacked
  - increased BMP level
  
3. **IBF Warlike Operations Area – Sea of Azov, north of latitude 46°N – Chart 5**
  - bonus equal to basic wage, payable for 5 days minimum + per day if longer;
  - doubled compensations for death and disability;
  - right to refuse sailing, with repatriation at company's cost and compensation equal to 2 month's basic wage
  - recommended to operate at ISPS Level 3
  
4. **IBF Warlike Operations Area – Northern Black Sea Region – Chart 6**
  - bonus equal to basic wage, payable for 5 days minimum + per day if longer;
  - doubled compensations for death and disability;
  - right to refuse sailing, with repatriation at company's cost and compensation equal to 2 month's basic wage
  - recommended to operate at ISPS Level 3
  
5. **Warlike Operations Area – all ports in Ukraine**
  - bonus equal to basic wage, payable for 5 days minimum + per day if longer;
  - doubled compensations for death and disability;
  - right to refuse sailing, with repatriation at company's cost and compensation equal to 2 month's basic wage
  - recommended to operate at ISPS Level 3

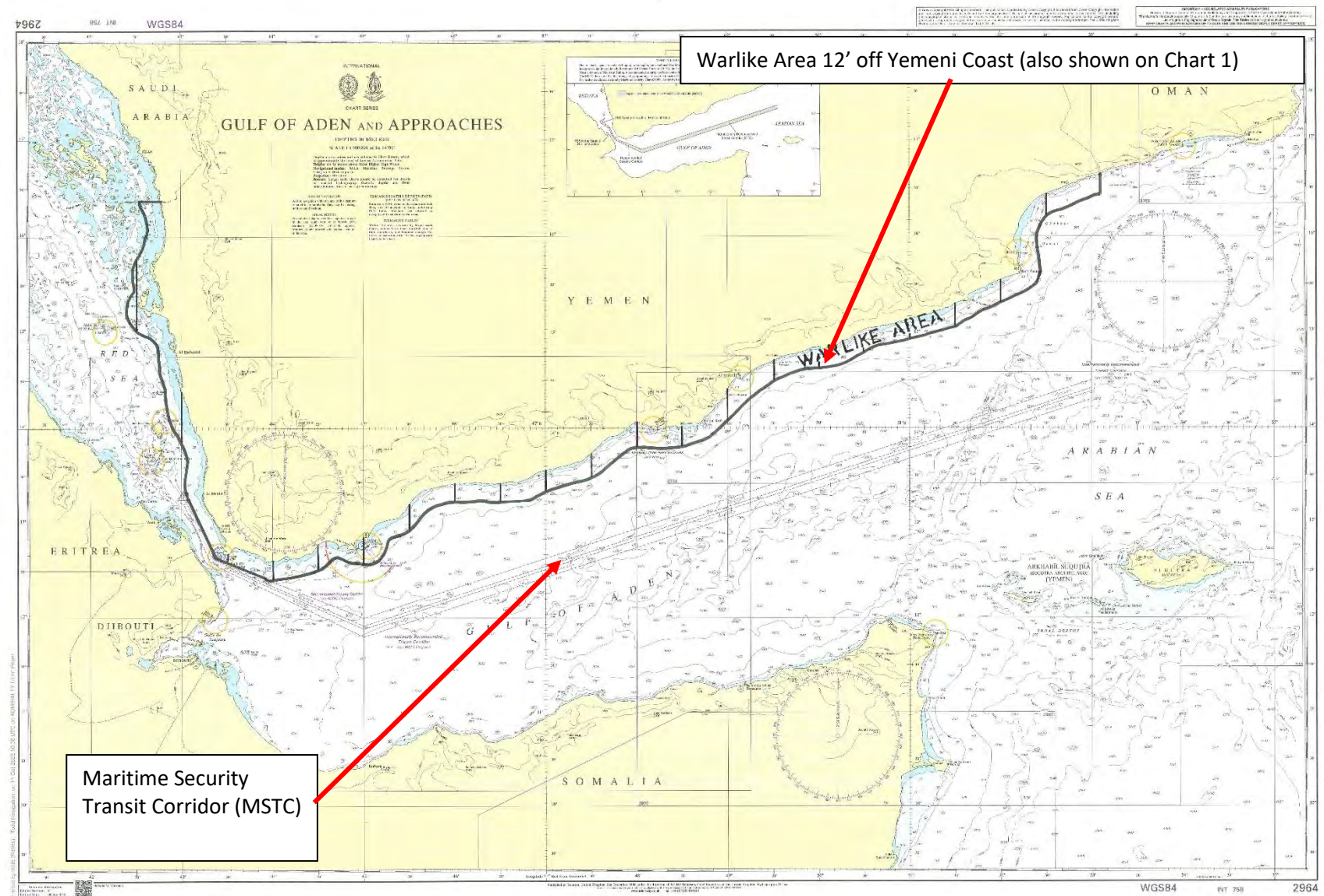
Chart 1: Warlike Area 12nm off the Yemeni Mainland coast (west)



Warlike Area 12' off Yemeni Coast

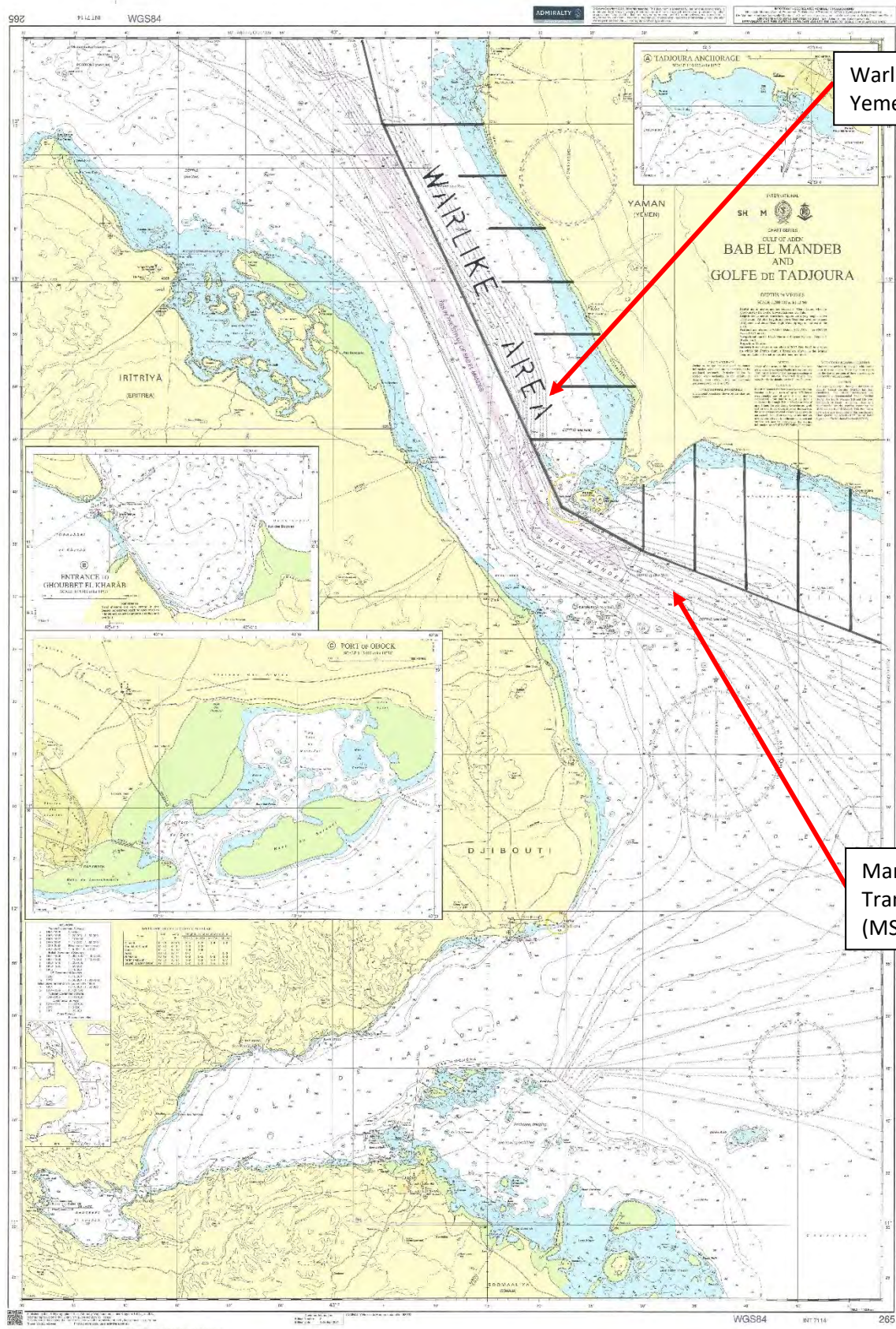


Chart 2: East Africa





**Chart 3: Maritime Security Transit Corridor (MSTC) in the Red Sea and the Bab al-Mandeb Strait**



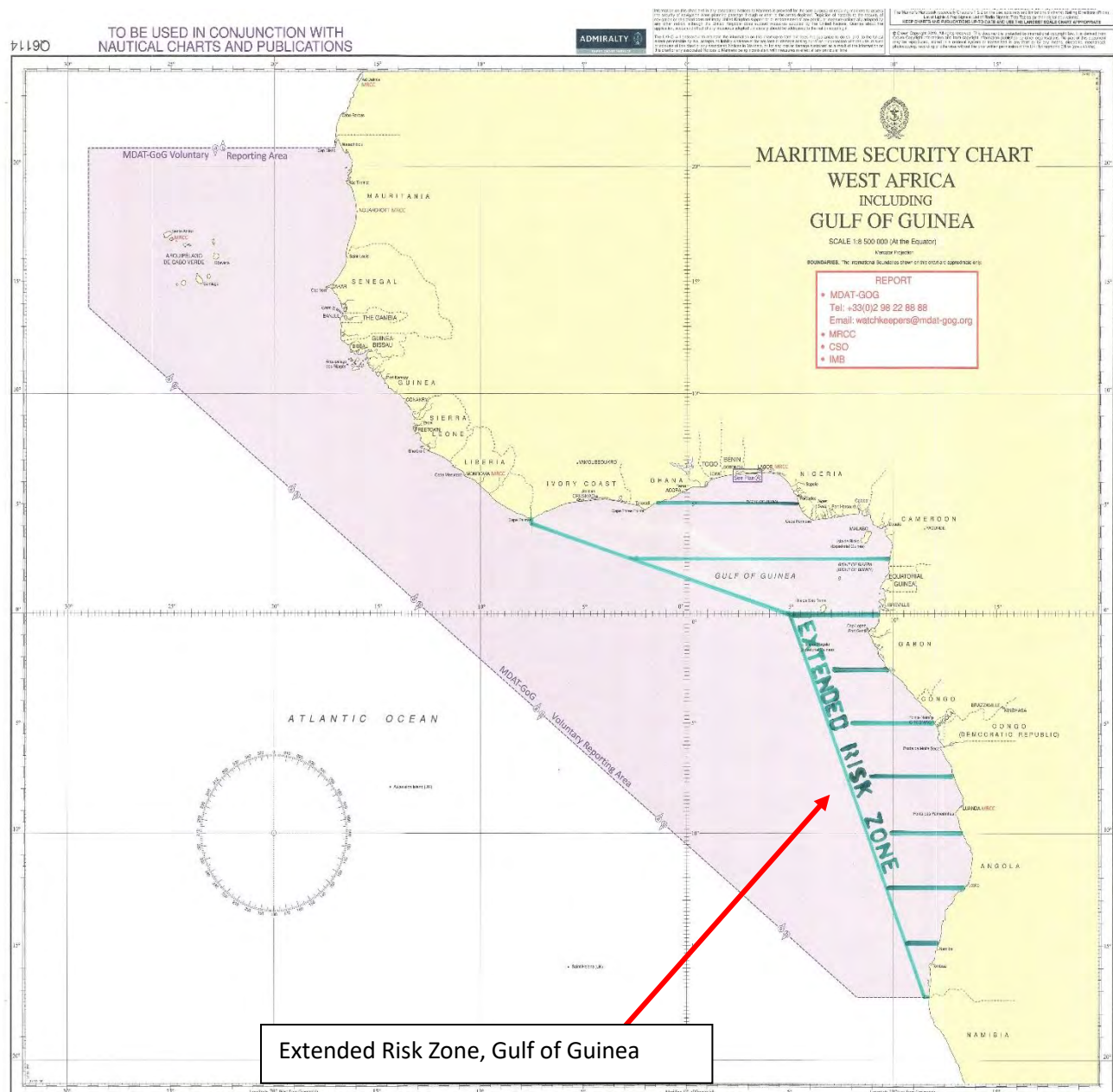
Warlike Area 12' off Yemeni Coast

Maritime Security Transit Corridor (MSTC)

*(Vessels transiting within the MSTC are NOT in the Warlike Area)*



Chart 4: Gulf of Guinea ERZ



**Chart 5: IBF Warlike Operations Area – Sea of Azov, north of latitude 46°N**

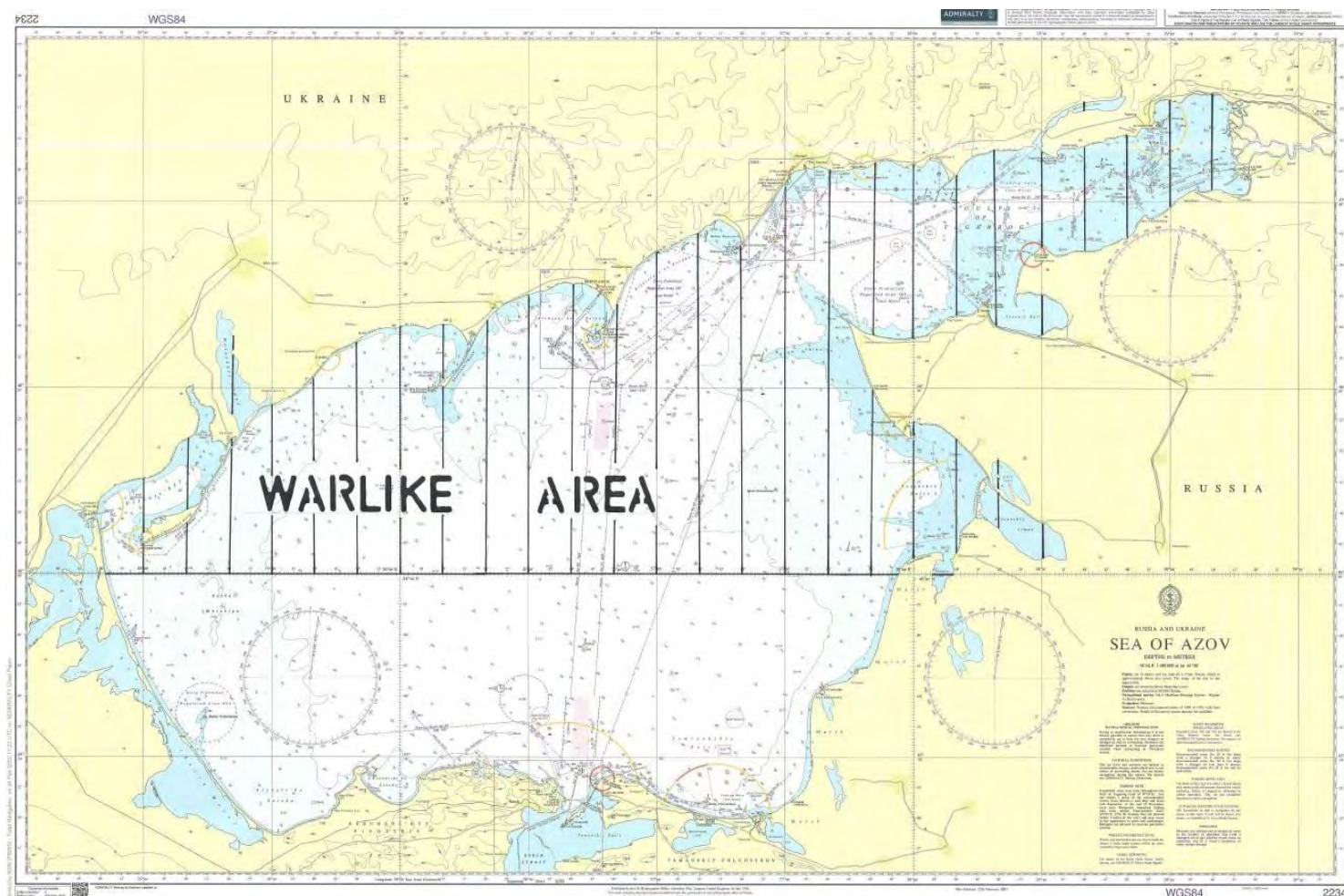
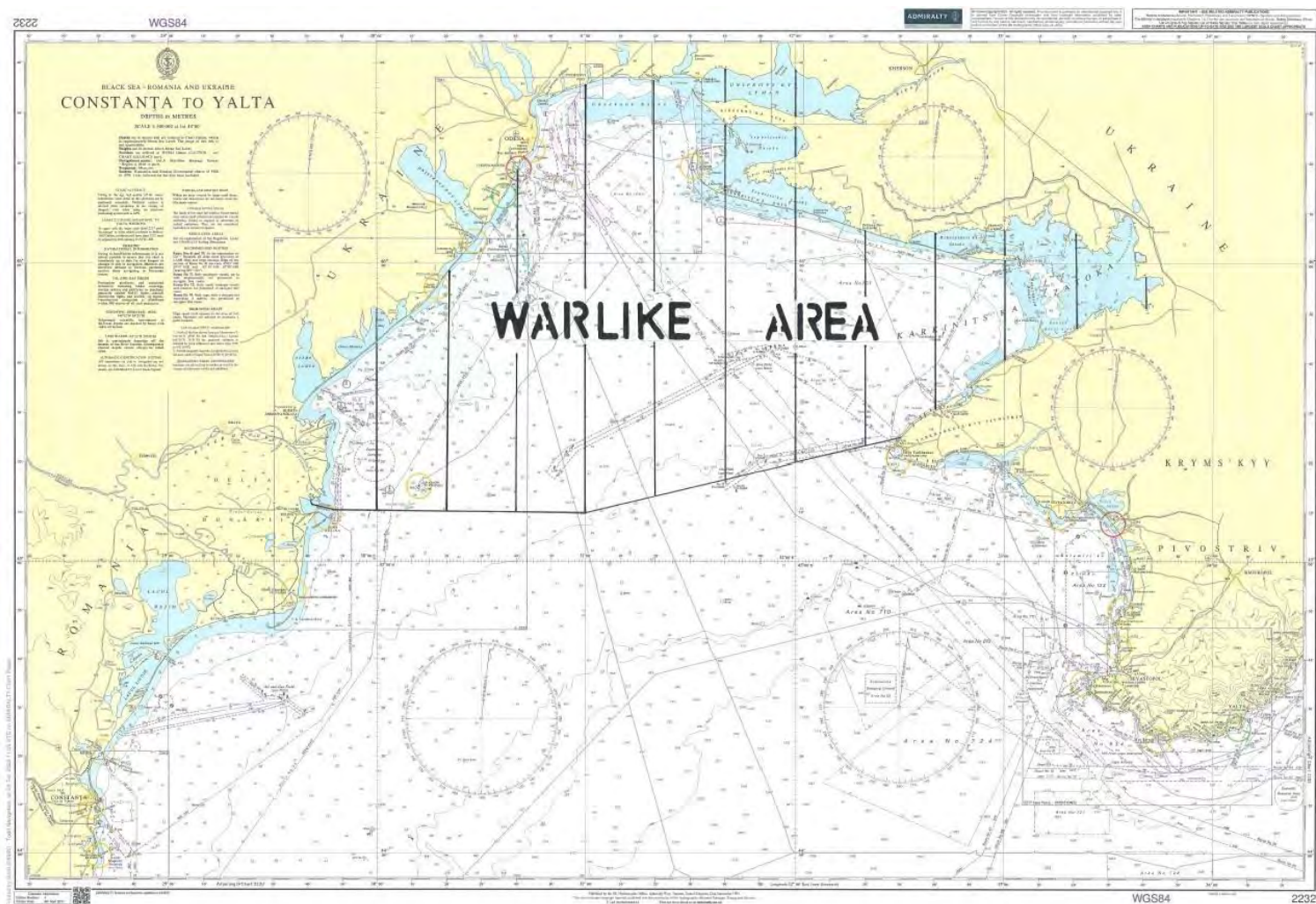




Chart 6: IBF Warlike Operations Area – Northern Black Sea Region



## **IBF list of Risk designations (details)**

### **DESIGNATION 1.**

#### **IBF Warlike Operations Area – 12 n.m. off Yemeni mainland Coast**

- *This Warlike Operations Area includes Yemeni territorial waters extending up to the 12 nautical miles limit from the border of Yemen with Saudi Arabia in the Red Sea and the border of Yemen and Oman in the Gulf of Aden, with the exception of the Maritime Security Transit Corridor (MSTC) in the Red Sea where the lanes of this safe passage corridor overlap with this Warlike Area.*
- *This Warlike Area applies to all vessels, whether underway or not, including all vessels at anchor and berthed “all fast” within the Area*

During a vessel’s transit of this Area, the protection of seafarers through the ISPS Level 3 measure should be adopted, which may include the provision of personnel or systems which appropriately reduce the vulnerability of a vessel. The sufficiency of such extra security measures should be determined depending on vessel type, size, freeboard during transit and speed, with consulting and seeking advice of respective ITF union(s) where necessary.

During the period of transit/stay within this Warlike Area, seafarers shall be entitled to compensation amounting to 100% of the basic wage and a doubled compensation payable in case of death and disability. This entitlement should be payable for a minimum of 5 days upon the entry into the Area and further for each day of the vessel’s actual stay in the Area.

In the case of vessels transiting the IBF Warlike Area, seafarers have the right not to proceed with the passage. In such an event, the seafarer concerned shall be repatriated at the company’s cost with benefits accrued until date of return to the port of engagement and with the payment of 2 months’ basic wage as compensation.

This Area excludes the Maritime Security Transit Corridor (MSTC) in the Red Sea established by Combined Maritime Forces (CMF). This corridor is patrolled by international naval forces and therefore recommended for a safe passage.

This designation is in force from 0001Z on 1 March 2018.



## **DESIGNATION 2.**

**“IBF Extended Risk Zone” – Gulf of Guinea including all ports, terminals and road anchorages and inland waterways.**

The coordinates of this area run in a direct line from the Liberia/Ivory Coast border to 00°N 005°E, to the Angola/Namibia border

During a vessel's transit of this area, protection of seafarers through the provision of increased security measures should be adopted. Such measures must be above the latest Best Management Practice (BMP West Africa) level and may include the provision of personnel or systems which appropriately reduce the vulnerability of a vessel. The sufficiency of such extra security measures should be determined depending on vessel type, size, freeboard during transit and speed, with consulting and seeking advice of respective ITF union(s) where necessary.

The adoption of Best Management Practice is required as a minimum standard of protection.

During the period of transit of the Extended Risk Zone, each seafarer shall be entitled to a bonus equal to 100% of the basic wage and a doubled compensation in case of injury or death on any day during which the vessel they are serving on is attacked. The proof of these entitlements shall be subject to a confirmed entry into the ship's logbook and a report of attack being lodged with recognised international reporting authorities, such as MDAT-GoG. The maximum period when these entitlements may apply shall not exceed the number of days of the vessel's transit of the IBF Extended Risk Zone. For the purpose of this article an attack means any unauthorised and obvious action taken by a third party in a willful attempt to board or damage the vessel or to harm the crew which leads to the activation of the relevant vessel contingency plans including the alerting of the whole crew. Individual random attempts (whether successful or not) of unarmed boarding for the purpose of unauthorized sale, begging, minor stealth and etc. leading to no harm/damage to the crew and posing no threat to seafarers' lives, health and safety shall not count as 'attacks' for the purpose of this article.

A vessel will not be considered to be in the Extended Risk Zone, once berthed “all fast” within the area.

This designation is in force from 0001Z on 1<sup>st</sup> January 2023

### **DESIGNATION 3:**

#### **Warlike Operations Area – Sea of Azov, north of latitude 46°N.**

During a vessel's transit of this Area, the protection of seafarers through the ISPS Level 3 measure should be adopted, which may include the provision of personnel or systems which appropriately reduce the vulnerability of a vessel. The sufficiency of such extra security measures should be determined depending on vessel type, size, freeboard during transit and speed, with consulting and seeking advice of respective ITF union(s) where necessary.

During the period of transit/stay within this Warlike Area, seafarers shall be entitled to compensation amounting to 100% of the basic wage and a doubled compensation payable in case of death and disability. This entitlement should be payable for a minimum of 5 days upon the entry into the Area and further for each day of the vessel's actual stay in the Area.

In the case of vessels transiting the IBF Warlike Area, seafarers have the right not to proceed with the passage. In such an event, the seafarer concerned shall be repatriated at the company's cost with benefits accrued until date of return to the port of engagement and with the payment of 2 months' basic wage as compensation.

The designation is in effect from 1<sup>st</sup> March 2022 until 24<sup>th</sup> January 2023, unless extended by mutual consent

### **DESIGNATION 4:**

#### **Warlike Operations Area - Northern Black Sea Region**

- This Warlike Operations Area runs from the Ukrainian/Romanian border to position 45° 10'N 031° 00'E and to position 45° 25'N 032° 30'E.

The entitlements are the same as those listed in **Designation 3** above (IBF WOA Sea of Azov, north of latitude 46°N)

The designation is in effect from 1<sup>st</sup> March 2022 until 24<sup>th</sup> January 2023, unless extended by mutual consent

### **DESIGNATION 5:**

#### **Warlike Operations Area – all ports in Ukraine**

- This Warlike Area applies to all vessels, whether underway or not, including all vessels at anchor and berthed "all fast" within the Area

The entitlements are the same as those listed in **Designation 3** above (IBF WOA Sea of Azov, north of latitude 46°N)

The designation is in effect from 1<sup>st</sup> March 2022 until 24<sup>th</sup> January 2023, unless extended by mutual consent